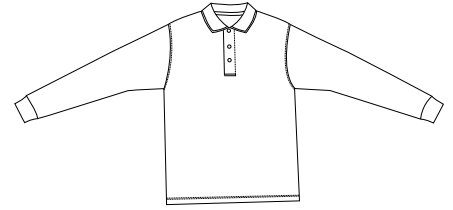
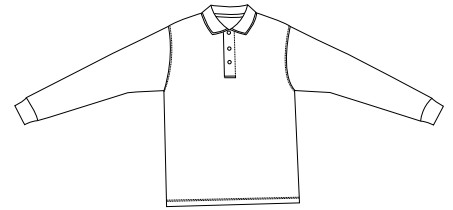


Rapid Dry™ Long Sleeve Sport Shirt

PORT AUTHORITY®



Front



Back

K455LS

* 5.6-ounce, 60/40 cotton/poly * Double-needle stitching * Flat knit collar * 3-button placket * Pearlized buttons * Rib knit cuffs * Side vents

Care Instructions:

Machine wash cold with like colors.
Do not bleach.
Tumble dry low.
Warm iron if necessary.

Finished Measurements in Inches

| Size | XS | S | M | L | XL | 2XL | 3XL | 4XL |
|--------|------|------|------|------|------|-----|------|-----|
| Chest | 19 | 20.5 | 21.5 | 23.5 | 25.5 | 27 | 28.5 | 30 |
| Shirt | 25.5 | 26.5 | 30 | 31 | 32 | 33 | 33.5 | 34 |
| Sleeve | 32 | 34 | 35 | 36 | 37 | 38 | 39 | 40 |
| Collar | 15.5 | 16 | 16.5 | 17 | 17.5 | 18 | 18.5 | 19 |

Chest width measured 1" below arm hole. Body length measured from back neck seam to hem.
Sleeve length measured from shoulder seam to hem. Collar measured by circumference.

Colors

| | |
|--------------|-----------|
| Riviera Blue | Charcoal |
| Classic Navy | White |
| Royal | Jet Black |

Please Note:

Colors shown are approximate and for reference only. For closest match see PMS colors, or for exact match, returnable samples and grommeted samples are available.

Color Chart

| Colors | Riviera Blue | Charcoal | Classic Navy | White | Royal | Jet Black |
|-------------|--------------|------------|--------------|------------|------------|-----------------|
| Textile PMS | No Match | 19-4104 TC | 19-4010 TC | 11-0601 TC | 19-3864 TC | 19-4203 TC |
| General PMS | 646 C | 432 C | 532 C | No Match | 661 C | Process Black C |